

2026年5月21日

株式会社Gotcha Gotcha Games

Announcing the newest entry in the RPG Maker family, "RPG Maker U2U"!

New Map Creation Features Revealed



Gotcha Gotcha Games Inc. (Headquarters: Chiyoda-ku, Tokyo; President: Satoshi Narita), a KADOKAWA Group company, has announced "RPG Maker U2U", the latest installment in the "RPG Maker" series of game development toolkits. We have also revealed details about a new feature that allows anyone to intuitively create maps with depth, even without specialized knowledge.



■ Depth and Beauty Created With "P2D"

"P2D (Perspective 2D)" is a visual style that adds three-dimensional depth and beautiful effects to the traditional 2D maps that RPG Maker is famous for.

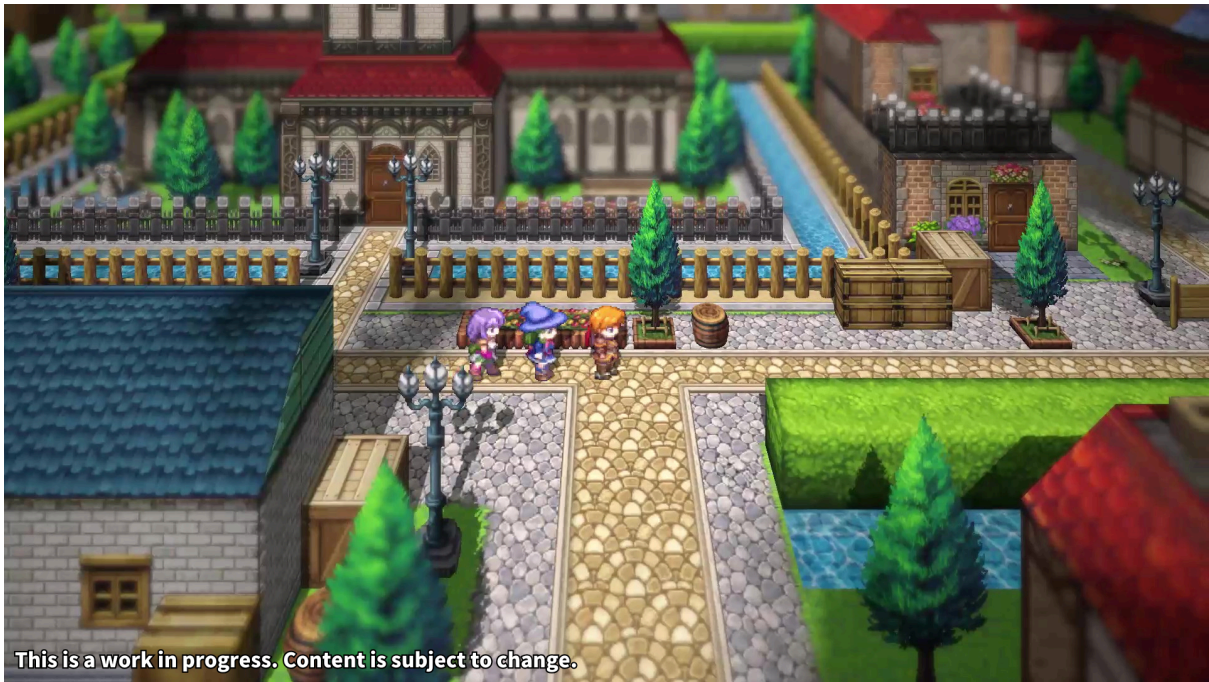
We have prepared an official trailer showcasing the P2D visuals, the biggest feature of this new entry to the RPG Maker series, as well as a quick look at the map editor in action. It demonstrates how easily anyone can create P2D maps with depth and detail.

Please check it out for yourself!

U2U Official Trailer:<https://youtu.be/53fz8G-6X4E>

U2U Official Website:<http://u2u.rpgmakerofficial.com/en>

Note: Footage is from a title still in development. Content is subject to change.



■ "P2D Map Editor": Easily Create P2D Maps with Intuitive Controls

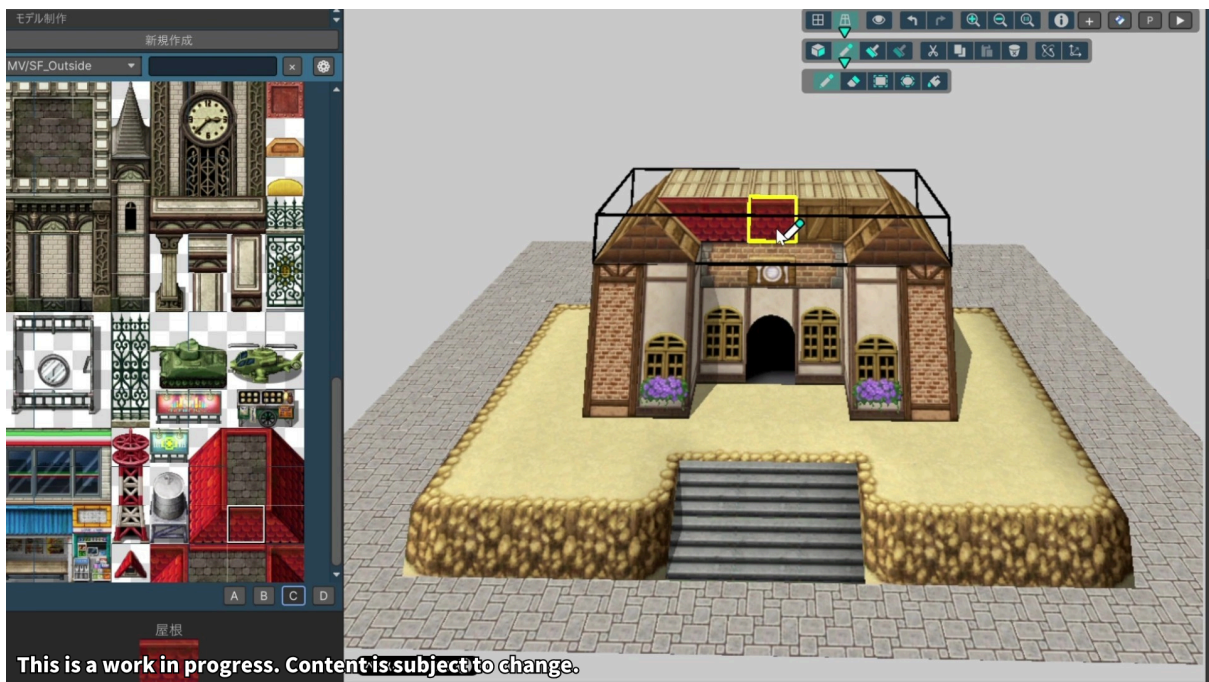
These new P2D visuals are created using a special "P2D Map Editor." This editor has been designed to allow anyone to easily create these detailed P2D maps with the same familiar

feel as is traditional for RPG Maker titles, without requiring any specialized knowledge typically needed by traditional 3D map making systems.

When focused on speed, easily build P2D maps just by placing pre-made objects.



But when you want to focus on the details, you also have the option to assemble objects from scratch. Past 2D RPG Maker assets (map tiles) can be used to decorate these objects.



Additionally, over 100 pre-made P2D maps are included, ready for immediate use in game creation. For more details, please be sure to read the first Producer Letter, scheduled to be published today on the official U2U X account!

■ Get hands-on with the "P2D Map Editor" at "BitSummit PUNCH"!

We will be exhibiting a playable version of the "P2D Map Editor" at the Gotcha Gotcha Games booth during BituSummit PUNCH.

Please come and experience the sensation of effortlessly creating a P2D map using intuitive controls at the venue!

Exhibition Period: Friday, May 22 – Sunday, May 24, 2026

Exhibition Content: "RPG Maker U2U" P2D Map Editor Playable Trial

Booth Location: 3F-B29

BitSummit Official Website: <https://bitsummit.org/en/>

■ Latest Information (Official X)

Further updates will be announced on our official X account.

Please follow us and stay tuned!

English: https://x.com/rpgmakeru2u_en

Japanese: https://x.com/rpgmakeru2u_jp

■ Official Social Media Accounts

- RPG Maker Development Team Official X: https://twitter.com/tkool_dev
- RPGMakerSeries Official X: <https://x.com/RPGMakerSeries>
- Official Discord: <https://discord.gg/8TZDDgPked>
- Official YouTube: <https://www.youtube.com/@GotchaGotchaGames>

Further Inquiries To:

Gotcha Gotcha Games Inc.

Email: info@gotchagotcha.jp